

Configuring Email Notifier

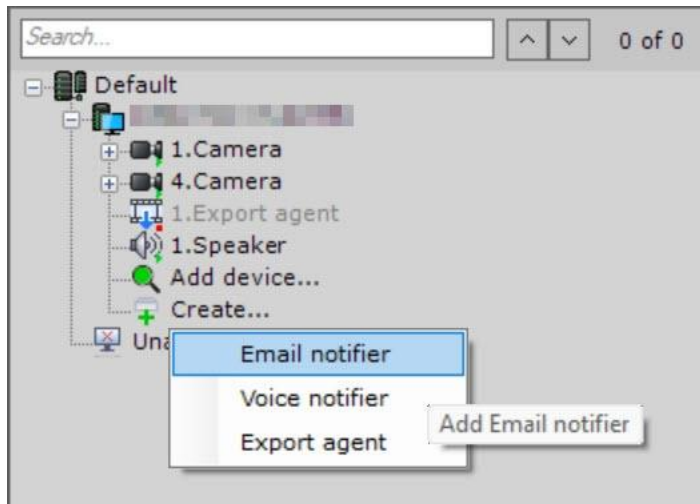
General information

Email notifier is used to configure emails which then can be sent to the user when a macro or an automatic rule is initiated.

Creating Email notifier

To create Email notifier, do the following:

1. In the list of hardware, click **Create...**
2. From the drop-down list, select **Email notifier**.



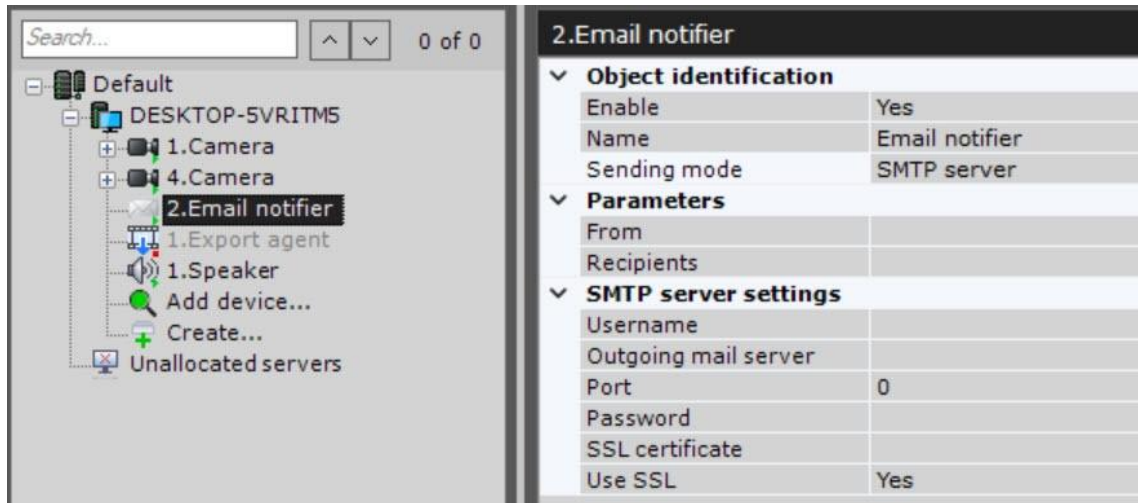
3. Click the **Apply** button.

As a result, E-mail notifier appears in the list of hardware.

Configuring Email notifier

To configure Email notifier, do the following:

1. In the list of hardware, select **Email notifier**.



2. In the **Name** field, enter the name of Email notifier.
3. In the **Sending mode** parameter, select the mode for sending email notifications:
 - a. **Cloud service NetFlow Cloud**;
 - b. **SMTP server**.

Attention!


- To send notifications via *Cloud service NetFlow Cloud*, you must connect the *Netflow* domain to *Cloud.netflowhub.com*
- *Netflowhub* has a limit of 35 messages a day. A message via *Netflowhub* is sent within a minute.

4. In the **From** parameter, enter the email address from which the messages are sent.

Attention!

When using email notification, email servers can disable the user account or deny authentication in some cases. We recommend you to disable all security parameters in your email account beforehand.

5. In the **Recipients** parameter, enter one or several email addresses to which messages will be sent.
6. Specify the SMTP server settings:
 - a. In the **Username** parameter, enter the name of the user account used to send messages on the outgoing mail server.

- b. In the **Outgoing mail server** parameter, enter the SMTP server of outgoing mail.
 - c. In the **Port** parameter, enter the number of the port used by the outgoing mail server.
 - d. In the **Password** parameter, enter the password of the user account on the outgoing mail server.
 - e. In the **SSL certificate** parameter, specify the path to the SSL certificate file if you use this protocol. If you don't specify a certificate, but the **Use SSL** parameter is enabled, then the email server certificate is used.
 - f. If you need to use SSL-encrypted connection when connecting to the outgoing mail server, select **Yes** for the **Use SSL** parameter.
7. Click the **Apply**  button.

Configuration of Email notifier is complete.

Checking Email notification

To check the email notification via Email notifier, send a test message by clicking the **Test** button.

2.Email notifier

▼ Object identification	
Enable	Yes
Name	Email notifier
Sending mode	SMTP server
▼ Parameters	
From	
Recipients	
▼ SMTP server settings	
Username	
Outgoing mail server	
Port	0
Password	
SSL certificate	
Use SSL	Yes

Sending mode
Service used for sending emails.

Test

When you do this, the following message will be sent to the email address specified in the **Recipients** field (see Configuring Email notifier): "Test message".